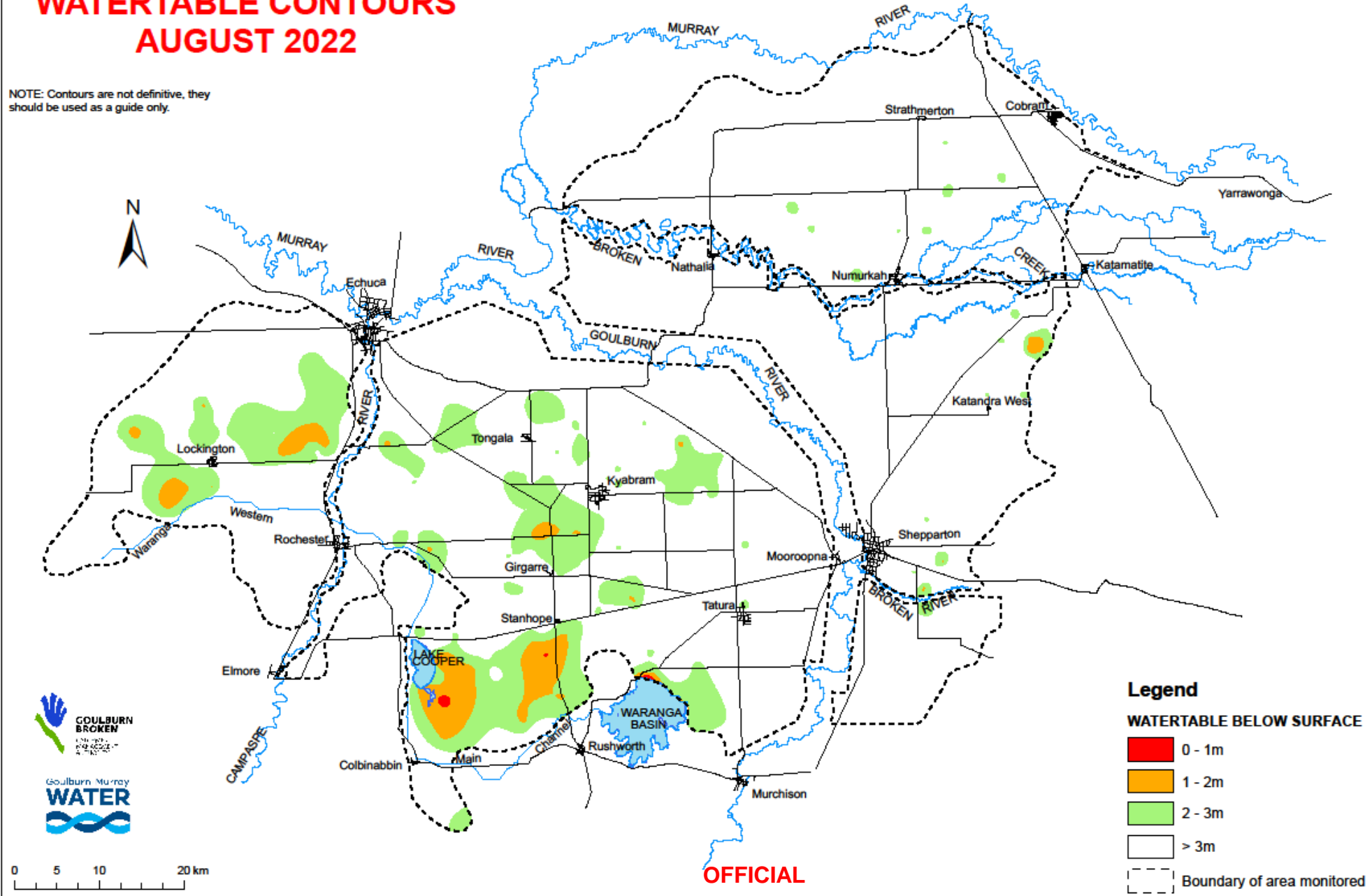


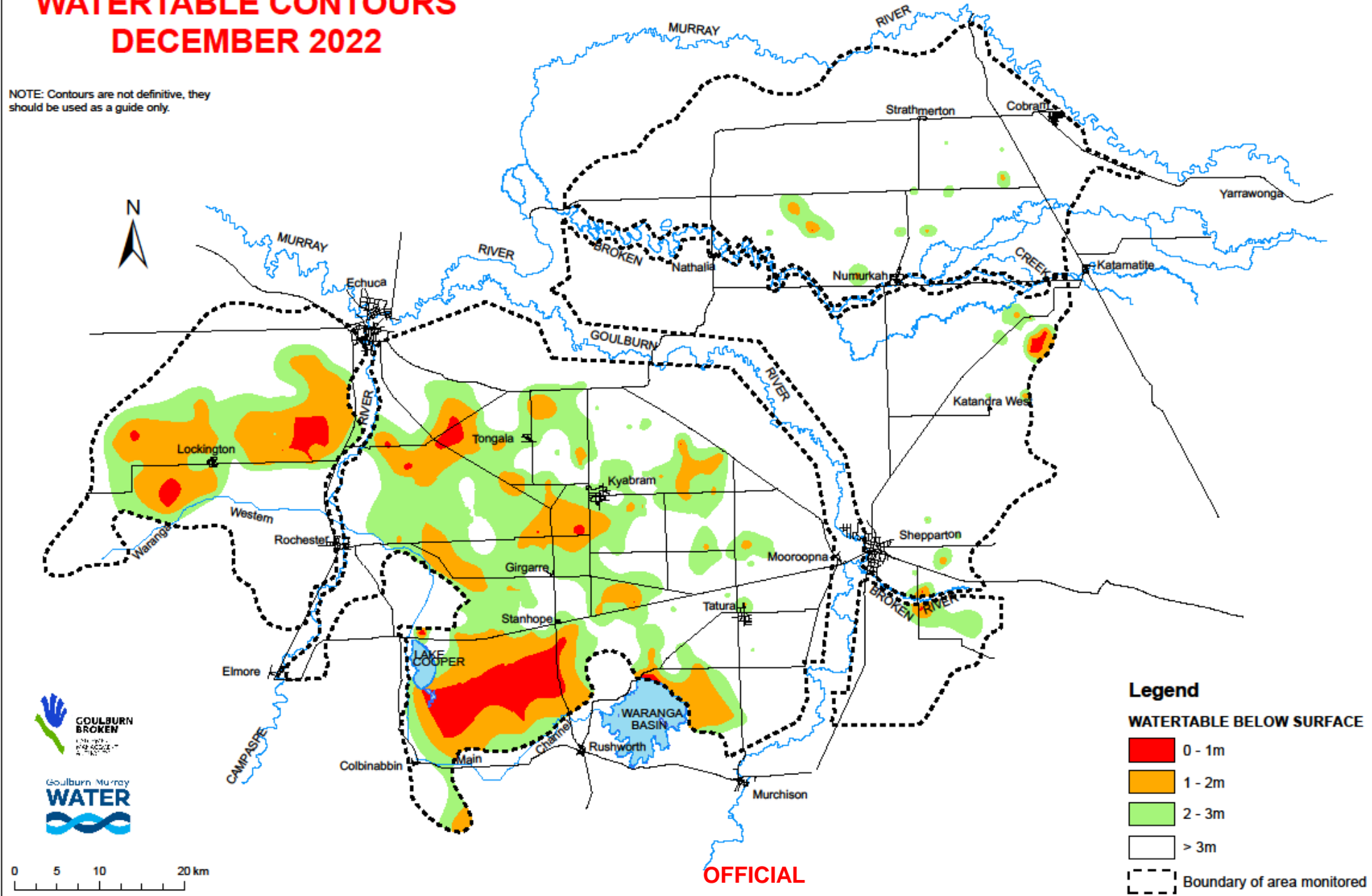
SHEPPARTON IRRIGATION REGION WATERTABLE CONTOURS AUGUST 2022

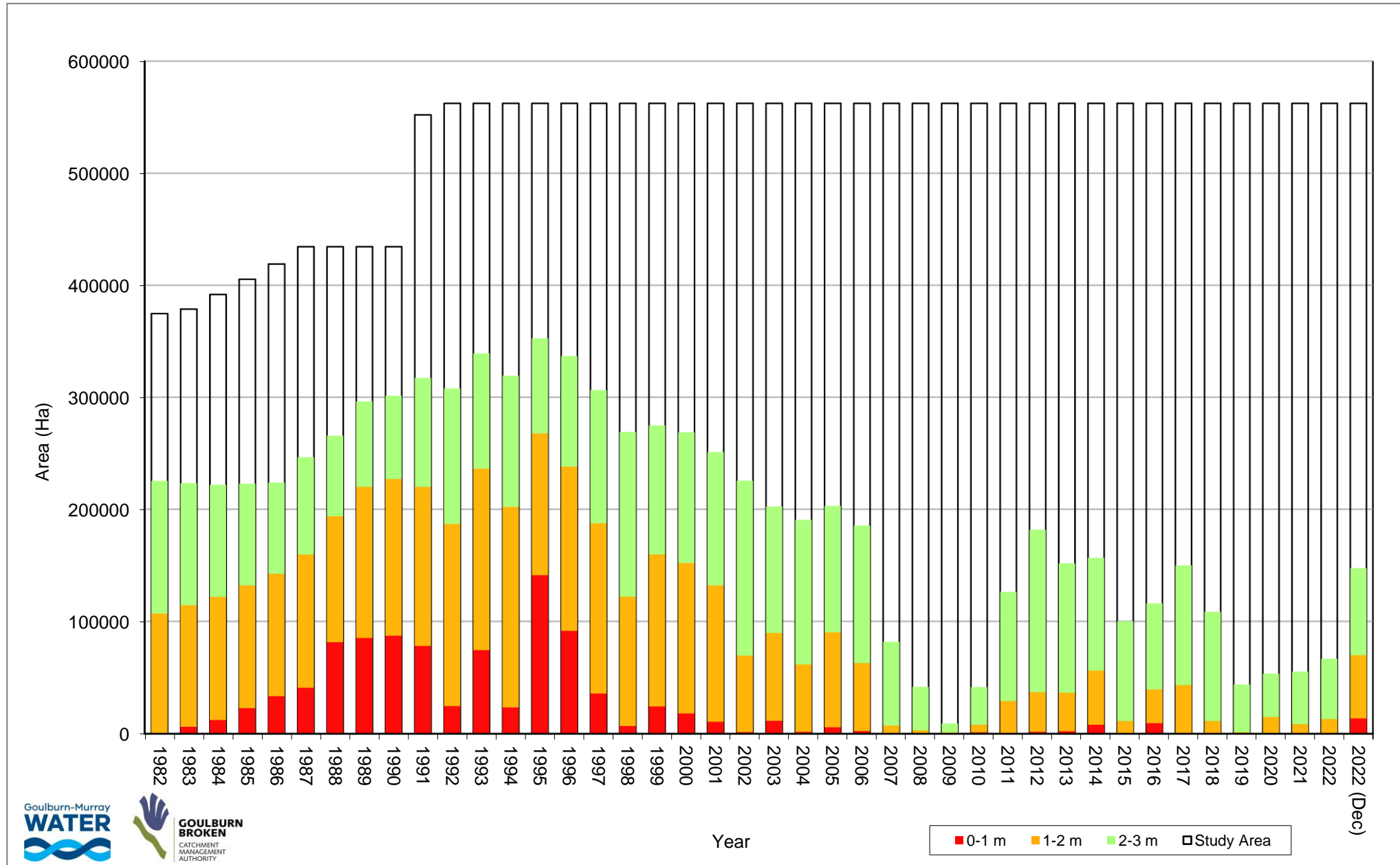
NOTE: Contours are not definitive, they should be used as a guide only.



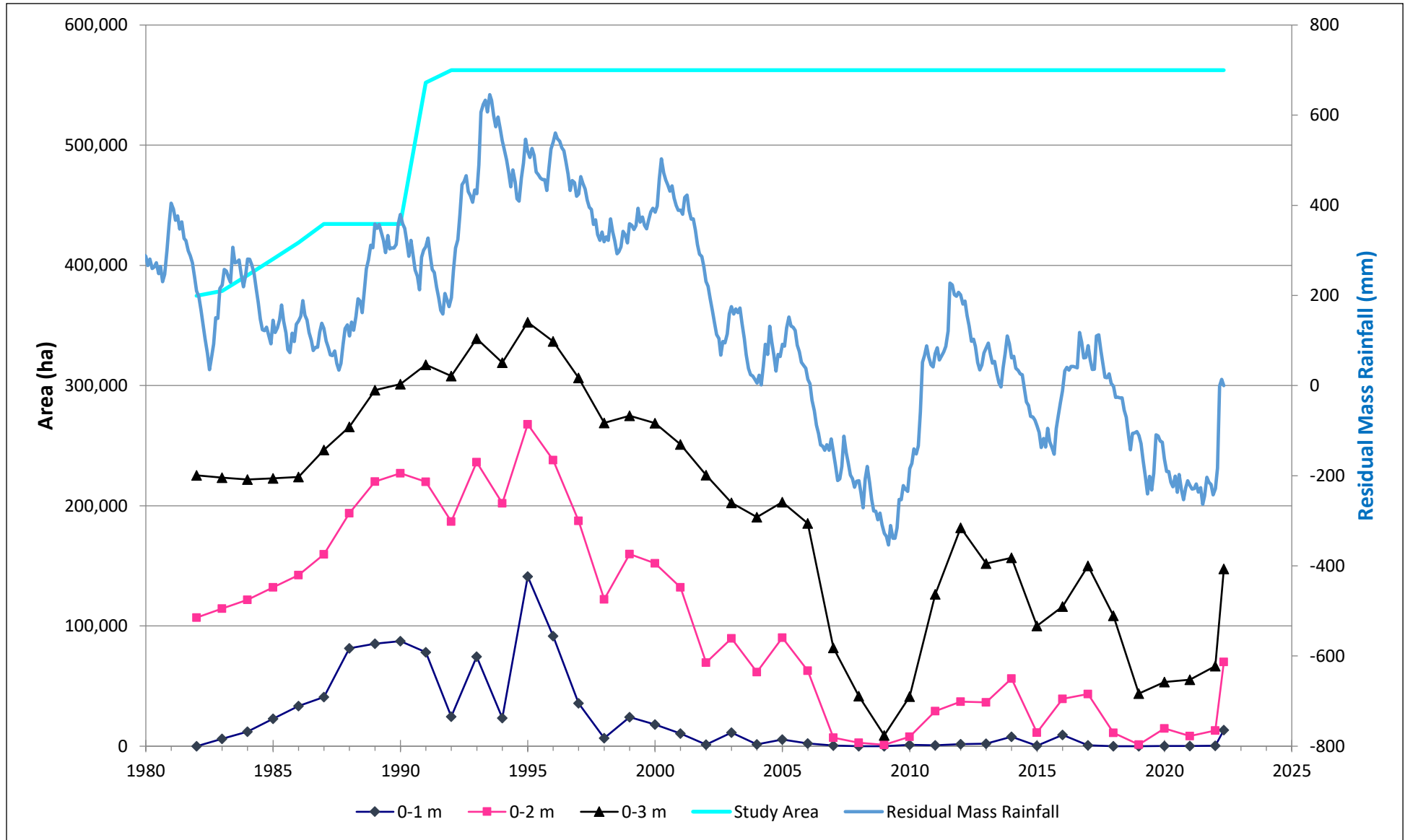
SHEPPARTON IRRIGATION REGION WATERTABLE CONTOURS DECEMBER 2022

NOTE: Contours are not definitive, they should be used as a guide only.





OFFICIAL



OFFICIAL

Table 1: Response across shallow groundwater segments

Time	Area (ha) within 0-1 m	Area (ha) within 0-2 m	Area (ha) within 0-3 m
Aug-2022	362	12,936	66,655
Dec-2022	13,497	70,003	147,513
Increase	13,135	57,067	80,858

Note:

- No active Public Groundwater Pumps have been required to operate
- Two pasture pump groups have reached watch levels